

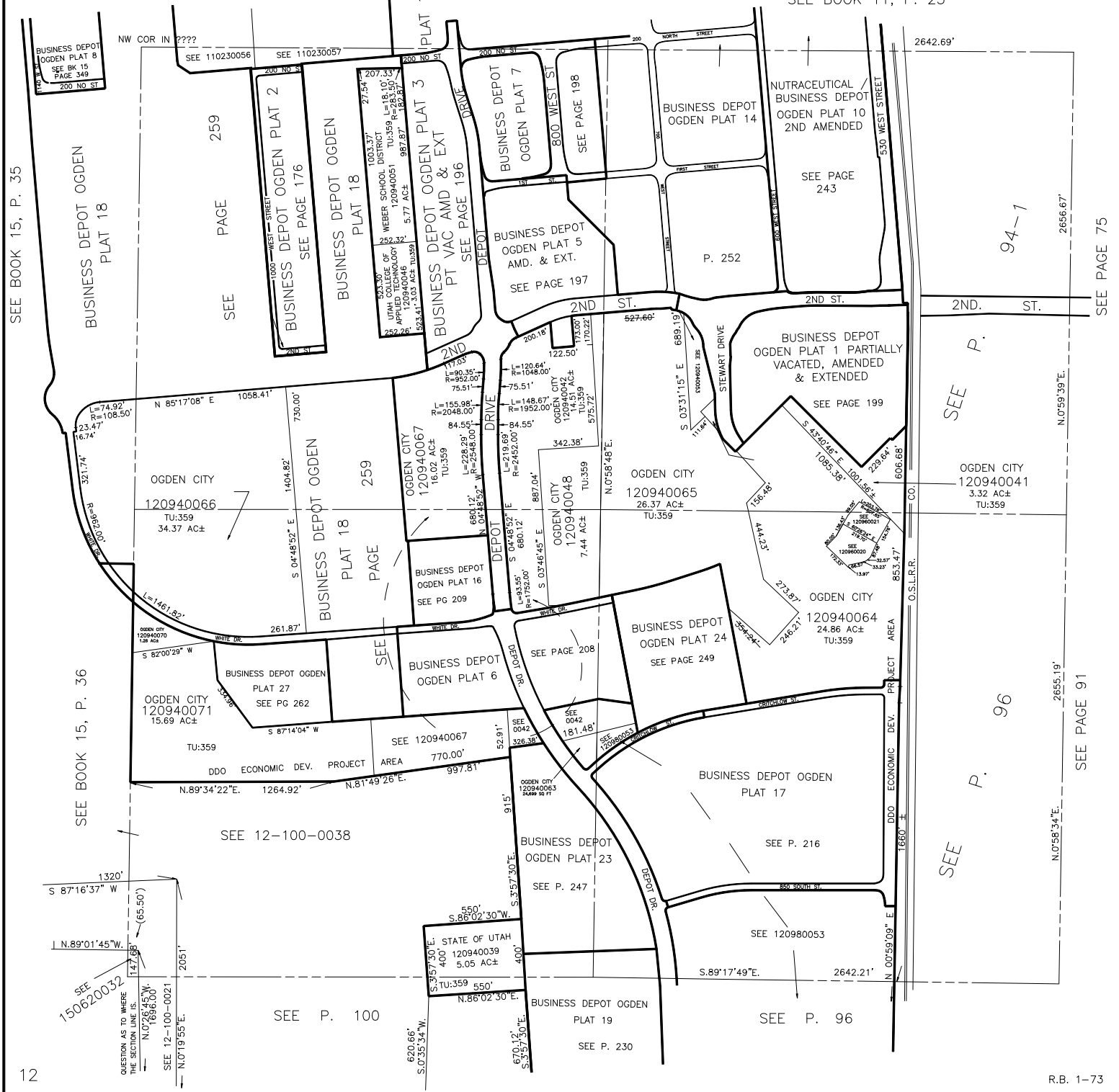
SECTION 18, T.6N., R.1W., S.L.B. & M.

IN OGDEN CITY

TAXING UNIT: 358, 359

SCALE 1" = 400'

SEE BOOK 11, P. 23



SEE BOOK 15, P. 35

SEE BOOK 15, P. 36

12

SEE PAGE 75

SEE PAGE 91

R.B. 1-73